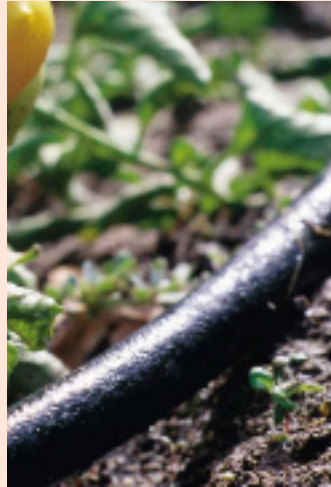
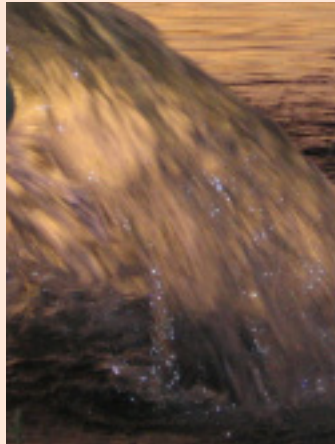


Crop Reporting

- Each year Central Colorado Water Conservancy District asks its' Water Allotment Contract Holders to fill out a crop report. The current crop report includes crop type, method of irrigation and how many acres were irrigated with the well(s).
- In the past, crop reports have asked for the number of days the wells were pumped and how many hours per day.
- The installation of flow meters on the wells has eliminated the need for that data.



Irrigation methods determine farm efficiencies.



CCWCD

3209 W 28 Street
Greeley, CO 80634
970-330-4540
970-330-4546 fax
www.ccwcd.org

Crop Data



For more
information
please call
970-330-4540



**Central Colorado Water
Conservancy District**

Historic Use of Crop Data



The Groundwater Management Subdistrict has been collecting crop data for over 20 years. The data includes crop types grown in the District boundaries, the number of acres of each crop type and the method of irrigation used.

Requirements

The Central Colorado Water Conservancy District's Board of Directors decided to make the requirement that each Water Allotment Contract Holder report their groundwater use annually. If you have a Class D Irrigation Contract we will ask you for your crop type, number of acres irrigated with the well(s) and the method of irrigation. If you have a Class D Non-Irrigation Contract, you will be asked for a description of your groundwater use.

Records

Central is obligated to maintain records on the use of the well(s) in our augmentation plans and insure that the groundwater use is consistent with the decreed purpose. We also have to stay current with the method of irrigation used on each contract. When a farm switches from flood irrigation to sprinkler or drip, the irrigation efficiency for the farm changes. Irrigation efficiency multiplied by the annual quota is the method used to determine the number of acre feet of pumping allocated annually.

Forms

Please complete the Crop Reporting Form to the best of your knowledge and return the form to our office by the deadline given on the form.

Questions

Please call CCWCD with any questions regarding your Crop Reporting Form

970-330-4540
Office

303-825-0474
Metro



Crop Reporting is just one of the many tools Central uses to collect the most accurate data possible.

Visit our website!

Go to www.ccwcd.org to learn more about Central and explore some interesting links.

Look for new issues of "The Headgate" and "The Waterline" to learn more about what Central is doing.